



Overview of
**SOLE -The International Society
of Logistics**

Presented by
**The Orange County, CA
Chapter 2, District 9**

May 2001



Objectives

- Explain what SOLE is about and the benefits of being a member
- Discuss SOLE's Certified Professional Logistician (C.P.L.) Program
- Explain how a local chapter can be established and the benefits from it
- Discuss how to become a member of SOLE
- Identify upcoming activities
- Summarize then address/discuss questions and/or concerns

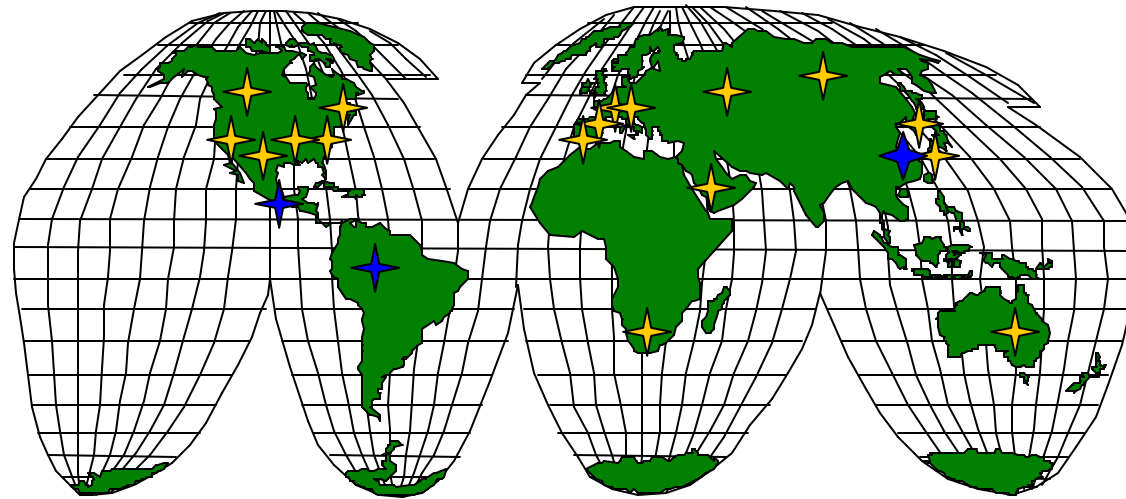


What is SOLE?

- Founded in 1966 SOLE, the International Logistics Society is an *international, non-profit professional society*
 - of *individual and corporate* members
 - dedicated to the advancement of the *art and science of logistics* technology and management
 - through *literary, educational and scientific* endeavors.
- The Society's *chapters and international organization* engage in a wide variety of professional activities in pursuit of this objective in over 35 countries throughout the world



SOLE Worldwide



Chapters and Members Provide
Commercial and Defense Focus
In Academia, Government, and Industry

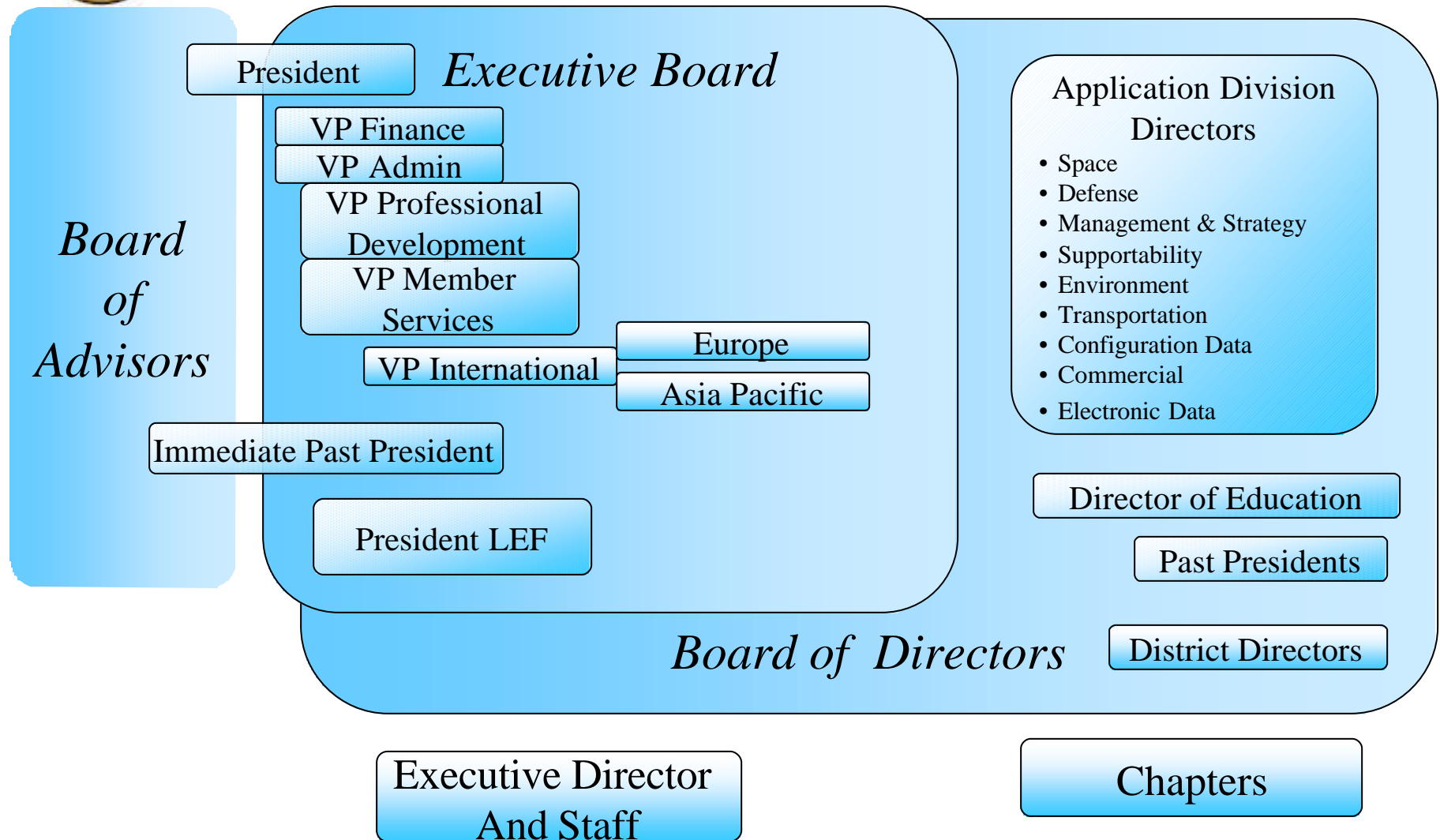


Organization

International Membership with
decentralized operations and
integration for administration



Organization





Board of Advisors

VADM James Amerault
Chief of Naval Operations

Mr. Allen W. Beckett
DUSD (LAMR)
Principle Assistant Deputy Under Secretary of
Defense

Dr. G. Kemble Bennett, Fellow
Texas A&M University System
Assoc. Vice Chancellor for Engineering

Benjamin S. Blanchard, CPL, Fellow
Virginia Tech
Professor of Engineering-Emeritus

Mr. William J. Delany
President, SAIC Information Services

Mr. Daniel DeVos
Concurrent Technologies Corporation
President & CEO

Mr. James T. Eccleston
ADUSD-SCI
Department of Defense
Assistant Deputy Under Secretary of Defense

LTG Henry T. Glisson
Director, Defense Logistics Agency

Mr. Oscar A. Goldfarb, Fellow
Program Executive Officer for Joint Logistics
(Retired)

LtGen William P. Hallin
NAMSA
Deputy General Manager and Director of
Logistics Programs and Operations



Board of Advisors

Mr. Jeffrey L. Holmes I

Manugistics, Inc
Senior Vice President, Government, Solutions, and
Alliances

Mr. Raymond T. Hoopes, CPL, Fellow

President of Hercules Hydraulics (Retired)

Mr. Charles M. Huber, CPL

Huber Consulting International
President

Mr. Louis A. Kratz

ADUSD (Logistics Architecture)
Dep. Under Sec. Of Def. (Logistics), LRO
Director, Logistics Systems Reengineering

BG George A. Landis (US Army, Ret)

Raytheon Technical Services Company
VP & General Manager, International Logistics
Services

Mr. Robert E. Luby, Jr

Price Waterhouse Cooper LLP

MG Charles Samuel Mahan Jr.

Deputy Chief of Staff for Logistics (DCSLOG)
HQ, Department of The Army

LTG John M. McDuffie

Dir for Logistics, Joint Staff
U.S. Army
J-4, USEUCOM

Lt Gen Gary S. McKissock

Deputy Chief of Staff for Installations & Logistics
HQ US Marine Corps



Board of Advisors

Mr. Thomas J. Parry

Deputy Director, Systems Engineering
OUSD(AT&L) IO/SE
(Acq, Tech, & Logistics)
Deputy Director, Systems Engineering

Mr. John F. Phillips

Allied Signal
V.P. Military Marketing

Mr. David J. Posek - BOA Chairman

Lockheed Martin Systems Support & Training
President

Major General Hawthorne L. Proctor

Commander
U.S. Army Quartermaster Center and School

Mr. Maurice P. Ranc Jr., CPL

AAI/Engineering Support, Inc.
President

Mr. Eric S. Stange

Accenture (formerly Andersen Consulting)
Partner

Dr. Russell A. Vacante

U.S. Army Management Staff College
Professor

LTG Michael Zettler

Deputy Chief of Staff for Installations & Logistics
Headquarters USAir Force-IL

Members Emeritus

Mr. Travis Engen

ITT Industries Inc.
Chairman & CEO

RADM Rowland G. Freeman III, (USN Ret), Fellow

Freeman Associates
President



Executive Board

President

Anthony E. Trovato, CPL
Raytheon Technical Services Company
ILS Manager

VP, Administration

Steve Lockwood
Lockheed Martin Technology Services

VP, Finance

Louis A. Russo
ITT Avionics
Manager, Support Services

VP, Member Services

James L. Martin, CPL
Advanced Logistics Technology, Inc.
President

VP, Professional and Technical Development

Ralph L. Harper
Raytheon Technical Services Company
Senior Logistics Analyst

VP, International - Pacific

Leo Lambert
Sete Procurement SA
Managing Director

VP, International - Europe

Ioannis Soukiouoglou
CosmoMarble S.A.
Managing Director

President, Logistics Education Foundation

Kenneth W. Zingrebe II
Barrios Technology, Incorporated
Senior Engineer

Immediate Past President, SOLE

Donald E. Desrochers CPL
Geo-Centers, Inc



Chapter and Local Leadership

Chairman

Russell Cook, CPL
Raytheon Technical Services Company
ILS Manager

Vice Chair

Jennifer Mercado, CPL
Raytheon Technical Services Company
ILS Manager

VC, Administration

George Nunes
Raytheon Technical Services Company
Logistics Manager
Process, Tools, and Technology

VC, Finance

Precy Ordinario, CPL
Raytheon Technical Services Company
ILS Manager

VC, Member Services

Floyd Horton, CPL
Raytheon Technical Services Company
ILS Manager

VC, Professional and Technical Development

Mark Nussbaum, CPL
Raytheon Technical Services Company
ILS Manager

Chair, Awards Committee

Bill Maas
Raytheon Technical Services Company
Logistics

Chair, CPL Committee

Sania Smith, CPL
Raytheon Technical Services Company
Logistics

WebMaster

Jim Coates
Raytheon Technical Services Company
Logistics

Newsletter Editor

Ron Taggart



Technical Divisions

- CALS/Electronic Data
- Commercial
- Configuration/Data Management
- Defense
- Environmental
- Management and Strategy
- Space
- Supportability
- Transportation and Distribution



Membership Benefits



Membership Benefits

- Quarterly journal: *Logistics Spectrum*
- Monthly newsletter: *SOLEtech*
- SOLE Membership Directory Online
- International Symposiums and Conferences
- National workshops
- Local Chapter meetings
- Regional workshops and symposiums
- Mentoring opportunities



Activities

(1 of 2)

Annual Logistics Symposium

- a three day technical meeting
- includes members and non-members from all over the world
- technical papers presented by leaders in the field of logistics
- exhibits

International Logistics Congress

- annual three day event conducted by an international district
- technical papers presented by leaders in the field of logistics
- exhibits

Logistics Spectrum

- quarterly professional journal
- distributed without charge to members with subscriptions available to non members

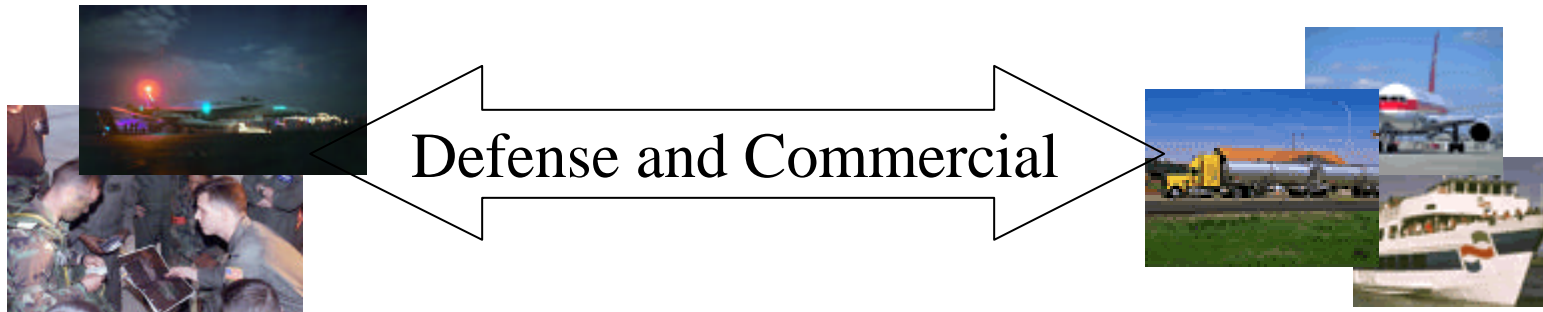
SOLEtech

- monthly technical newsletter
- current topics in logistics and related fields
- distributed electronically to all members



SPECTRUM

- Quarterly Publication
 - Each issue sponsored by an Application Division under the Application Division Director
- Covers all aspects of Logistics



- Transportation – Environmental – Defense – E-Data - CM/DM – Supportability – Defense -

We need to increase target distribution to selected offices in
DOD and Industry



SOLEtech



- Monthly Technical Publication
 - Editor Ben Blanchard
- Brings current logistics issues into focus through member submitted discussions.
- Electronic Distribution
- Provides single point listing of all International Logistics Activities, Symposiums, and Training on a non competitive basis.

This is one of our best efforts and we must make wider distribution to reach industry, defense and academia as a vehicle for “selling the society”.



Associated Foundations

Logistics Education Foundation

- independent, non-profit corporation
- encourages, promotes, and facilitates education of professional logisticians, engineers, managers, and educators
- designs and sponsors projects for improving quality of logistics research and teaching
- **Membership in SOLE provides Membership in the LEF.**



SOLE Web Site

- **<http://www.SOLE.org>**
 - Membership info
 - Calendar of events
 - Points of contact
 - Links to technical information
 - CPL Certification Information
 - LEF Scholarship Application forms
 - Job Board



Certified Professional Logistician

CPL Program



CPL Program

- **The CPL program was**
 - **Initiated in 1972,**
 - **first exam was given in June of 1974.**
- **Established to give recognition to those who have a broad knowledge of logistics. It is for professional development more than professional advancement.**





What is a Certified Professional Logistician?

- **An individual of proven competence in logistics who passes an examination designed to test a broad knowledge of the entire logistics spectrum.**
- **Recognized by SOLE, an international organization.**



CPL Program

- Examinations held twice annually in May and November
 - consists of four two-hour sessions
 - conducted during one continuous eight-hour period
- The four parts of the exam are:
 - Systems Management
 - Systems Design and Development
 - Acquisition and Production Support
 - Distribution and Customer Support



Why Should I Become a CPL?

- Receive visibility and recognition from other professionals;
 - there are less than 2000 active logisticians worldwide designated as CPLs.
- Demonstrate your interest and knowledge in logistics beyond your immediate job.
- Demonstrate your knowledge in a broad range of logistics applications.



Who Qualifies To Be A CPL?

- Demonstrated professional experience
- Nine years practicing or teaching logistics
- Two years experience in each of two logistics fields
- Education may be equated to experience
 - BS and five years experience
 - MS and four years experience
 - Ph.D. and three years experience



Local Chapters

Meeting Members Needs at the Local Level



OC SOLE A New Paradigm

- OC SOLE participation had been diminishing over the last few years
- A new paradigm was needed to support members working far from home, and extended hours
- The '00-'01 Board developed an approach that allows members to participate in monthly meetings from their work sites
 - Two meetings per quarter are held at noontime
 - Speakers are hosted at one of several locations
 - Additional sites are easily linked via NetMeeting
- Participation has more than tripled

Districts and Chapters in the United States

Northern Mountain - 8

- Colorado,
- Idaho,
- Montana,
- Utah,
- Wyoming

Director

North Central - 4

- Illinois,
- Indiana,
- Michigan,
- Ohio,
- Wisconsin

Director: Jerry Baker

Central - 6

- Iowa,
- Kansas,
- Minnesota,
- Missouri,
- North Dakota,
- Nebraska,
- South Dakota
- Director: Phillip T. Frohne, CPL

New England - 1

- Connecticut,
- Maine,
- Massachusetts
- New Hampshire,
- Rhode Island,
- Vermont)

Director: Gary Ehrig

Northeastern 10

- New Jersey,
- New York,
- Pennsylvania

Director: Kenneth East, CPL

Capital Region - 2

- Delaware,
- District of Columbia,
- Maryland,
- Virginia,
- West Virginia

Director: B.J. Silvey

Southeastern - 3

- Florida,
- Georgia,
- North Carolina,
- South Carolina

Director:

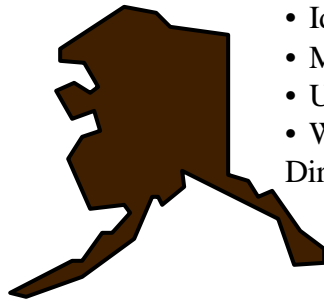
South Central - 5

- Alabama,
- Arkansas,
- Kentucky,
- Louisiana,
- Mississippi,
- Tennessee

Director: James C. Sharp, CPL,

Southern Mountain - 7

- New Mexico,
- Oklahoma,
- Texas
- Director: Winn Harris



Pacific Northwestern - 16

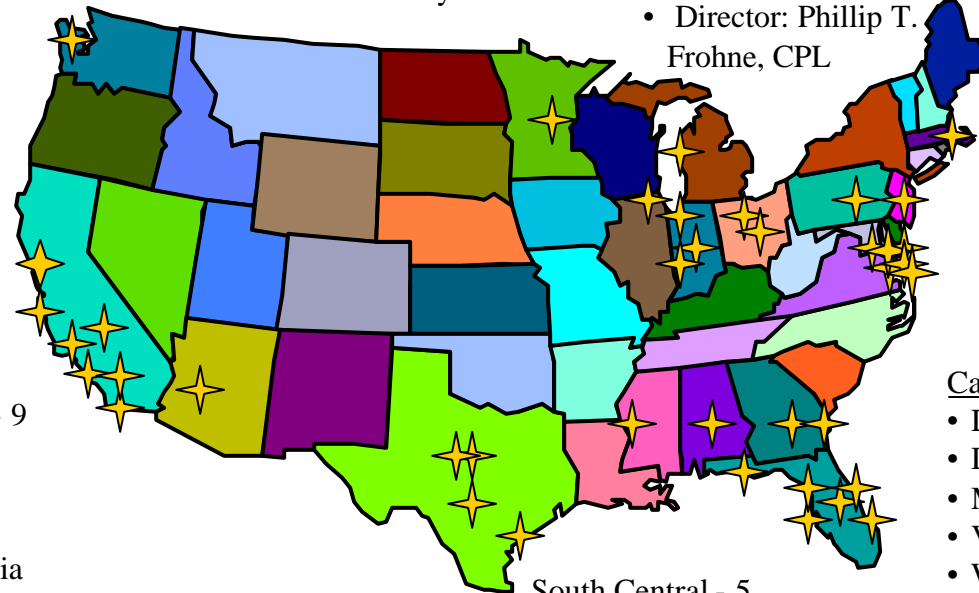
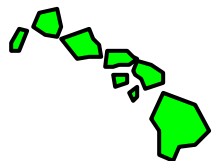
- Alaska,
- Northern California,
- Oregon,
- Washington

Director: Edward Donahue

Pacific Southwest - 9

- Arizona,
- Hawaii,
- Nevada,
- Southern California

Director: Elizabeth Hudspeth,



Numbers indicate District Designation

★ Indicates Active Chapter



Chapters and Members In Countries Throughout the World

Canada - 26

Singapore - 31 ✨
South Africa - 25
South Korea - 15
Japan - 19 Director: Haruhisa Denda ✨
Republic of China - 14

Australia - 28 ✨ ✨ ✨

Current Initiatives:
Mexico
India
Hong Kong



Virtual District - 34 (Worldwide Internet) Director: Francois Berthelemy, CPL,

SOLEurope

- France - 22 Director: Jean Trocello
- Germany - 17 Director: Mark S. Larkin, ✨ ✨ ✨
- Greece - 32 Director: John Soukiouoglou, ✨ ✨ ✨
- Israel - 30
- Italy - 20 ✨
- Luxembourg - 27 Director: Timothy B. Russell, CPL
- Russian Federation - 33
- Saudi Arabia - 11
- Scandinavia - 23 (Norway, Sweden, Denmark, Finland, Iceland, Faeroe Islands) Director: Johnny Westergard, ✨ ✨
- Spain - 29 Director: Jose Suanzes,
- United Kingdom - 18 Director: Jezdimir Knezevic, Ph.D, ✨



Benefits of Local Chapters

- Monthly meetings/technical sessions tailored to needs of local members
- Local workshops and symposia
- Field trips to local establishments involved in logistics related activities
- Opportunities to explore leadership capabilities
- Forum to write and present technical subjects
- Public speaking opportunities
- Networking on a local level



Training Opportunities

Local Professional Development

Examples of range of topics a chapter with local speakers can present

- Acquisition and Logistics Reform
- Contractors on the Battlefield
- Combat Service Support to the “Army After Next”
- Theater Distribution - Extending the Revolution in Military Logistics to the Operational and Tactical Level
- Transformational Logistics - The Logistician’s Challenge for the 21st Century
- Distribution Based Logistics
- Kosovo Lessons Learned

Depth and breadth of local technical programs depends on the initiative of its members and upper management support



Upcoming Activities

- Joint Government/Industry Supportability Information Exchange 2001 Annual Symposium (LOGSA/J-GISIE) (7-11 May) Huntsville, AL
- 36th Annual International Logistics Symposium (14-16 August) Orlando, FL
 - Theme: Logistics: Tools For the 21st Century
- 17th International Logistics Congress (ILC-2001) Thessaloniki, Greece
 - Theme: From Alpha to Omega

SOLE Headquarters Website: <http://www.sole.org/>

SOLE OC Chapter Website: <http://members.nbc.com/ocsole/>



Guidelines for Crediting Continuous Learning Activities

(Excerpts from OSD Policy Attachment 1)

- Categories of Creditable Activities:

Training, Education, Experience, Professional Activities

- Professional Activities Category:

Encompasses activities sponsored by professional societies and associations that enable acquisition professionals to stay current in their functional or technical disciplines or in acquisition reforms, as well as other professional activities unrelated to society participation, such as teaching, lecturing and speaking at symposia and conferences publishing and writing.

- Professional Activities:

Professional Exam, License, Certificate	10-30 points in yr received
Active Association Membership	5 points
Teaching/Lecturing	2 points/hr; max 20 points in 2 yrs
Symposia/Conference Presentations	2 points/hr; max 20 points in 2 yrs
Workshop/Conference Attendance	1 point/hr of content; max 8 per day
Publications (only in year published)	
Texts	25-40 points
Technical Papers, Monographs, etc.	10-25 points
Consulting	10-25 points
Patents (only in year received)	15-40 points



Summary

- SOLE is a non-profit professional association dedicated to promoting the art and science of logistics through education
- SOLE offers its members a quarterly journal, monthly technical newsletter, and local meetings highlighting guest speakers and/or technical issues
- SOLE hosts regional, national and international workshops and symposia
- SOLE has the only internationally recognized certification program for its members
- All that is necessary for success is



ACTION!!!

- Having the world's best idea will do you no good unless you act on it. People who want milk shouldn't sit on a stool in the middle of a field in hopes that a cow will back up to them.

– Curtis Grant, Writer

Any questions ?



Who Do I Contact For More Information?

- SOLE HQ:
 - Sarah James, Phone: (301) 459-8446

- Chapter Contact
 - Russell Cook, Phone: (310) 607-7918
 - Jennifer Mercado, Phone: (310) 952-4450
 - Floyd Horton, Phone: (310) 952-4576